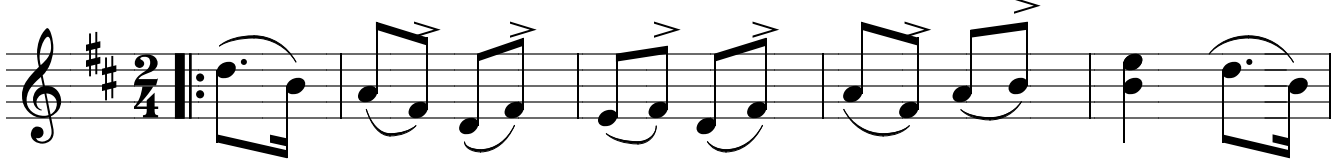
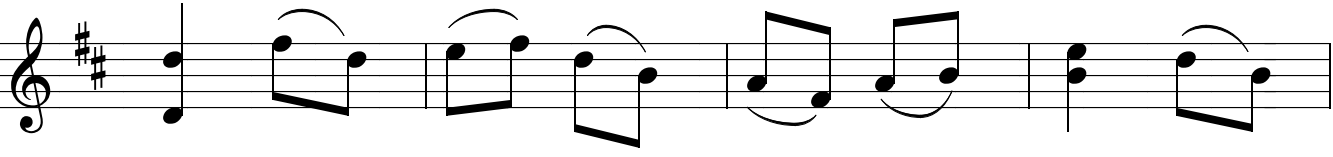
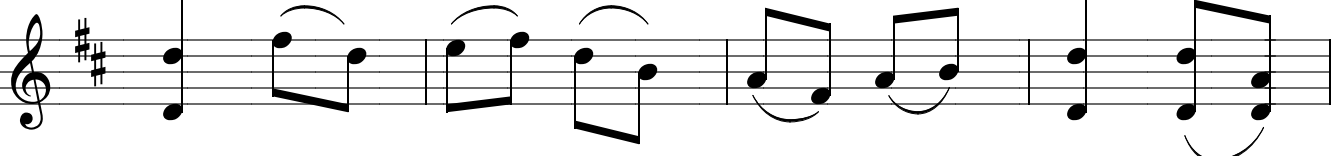
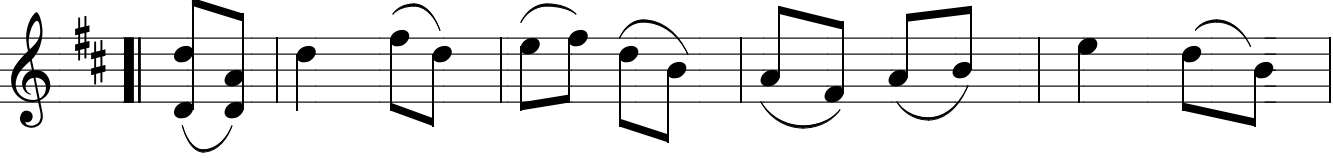


The Kevin Burke Polka Set


Charlie Harris' Polka



*simile*



Kevin Burke #2



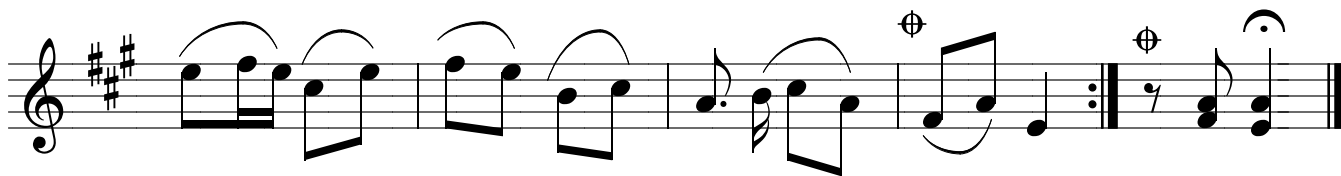
Musical score for Kevin Burke #2, consisting of four staves of music in treble clef with a key signature of three sharps (F#, C#, G#). The piece features a series of eighth and sixteenth notes, often beamed together, with various slurs and accents. The first staff begins with a repeat sign. The fourth staff concludes with a double bar line and a key signature change to three sharps.

Jessica's Polka



Musical score for Jessica's Polka, consisting of three staves of music in treble clef with a key signature of three sharps (F#, C#, G#). The piece features a series of eighth and sixteenth notes, often beamed together, with various slurs and accents. The first staff begins with a repeat sign. The third staff concludes with a double bar line.

Last time to



Musical score for Last time to, consisting of one staff of music in treble clef with a key signature of three sharps (F#, C#, G#). The piece features a series of eighth and sixteenth notes, often beamed together, with various slurs and accents. The staff concludes with a double bar line and a key signature change to three sharps.